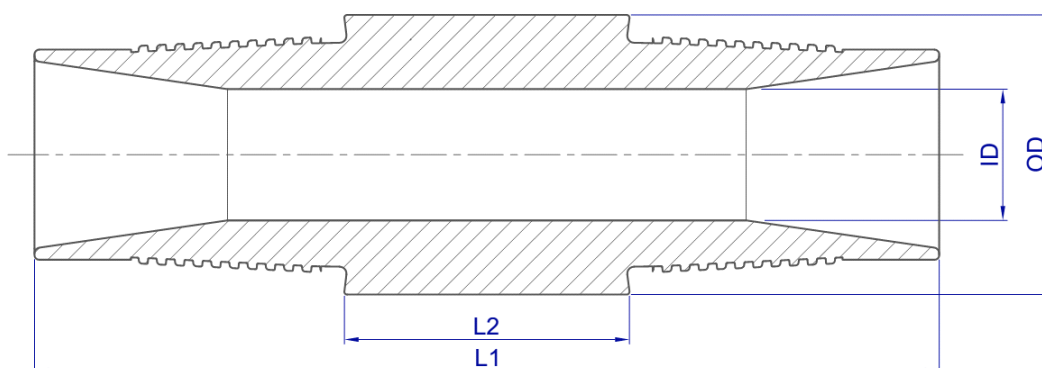


## HolloRod™ Nipple 576 SEC NU

### Dimensions:\*



OD	ID	Type	L1	L2	Nominal Weight	Available Grades
2.217" (56.3 mm)	1.217" (30.9 mm)	LI-31	6.22" (158 mm)	1.969" (50 mm)	2.99 lb (1.355 kg)	GR125 HS147

\*All values listed are nominal dimensions. Wrench flats optional upon special request

### Connection:

Special non upset connection, with smooth internal design to enhance flow.

It's tapered, 8 TPI, flank-valley contact thread profile with pin-box diametrical interference and angled torque shoulder provides an excellent torque transmission as well as an easy make-up.

### Steel Grades:

HolloRod™ Nipples are manufactured using seamless cold drawn carbon or alloyed steel pipes, calcium treated to modify inclusions to improve toughness. Controlled microstructure to obtain optimum mechanical properties.

### Chemical Composition:

Typical chemical compositions (wt%) listed in the following table.

Grade	C (%)	Mn (%)	Si (%)	S (%)	P (%)	Cr (%)	Ni (%)	Mo (%)	Others (%)
GR125	0.31	0.90	0.25	0.020 max	0.025 max	0.55	0.55	0.18	V: 0.10 max
HS147	0.23	0.55	0.25	0.010 max	0.010	0.95	0.30 max	0.70	B:0.01max, Ti 0.1max, Nb: 0.1 max.

## Mechanical Properties:

Mechanical properties are listed in the following table.

Grade	Yield Strength (0,2% offset)	Tensile Ultimate Tensile Strength	Elongation (2")	Toughness CVN@RT Full Size	Hardness
GR125	110 to 140 kpsi (758 to 965 MPa)	125 to 155 kpsi (862 to 1069 MPa)	10% Min	-	26-35 HRC
HS147	110 to 140 kpsi (758 to 965 MPa)	125 to 155 kpsi (862 to 1069 MPa)	10% Min	-	26-35 HRC

## Performance Data:

Nipple Grade	HolloRod™ Grade	Type	Make Up Torque	Standoff	Sealability (1)	Max. Pulling Force	Max. Operative Torque	Application
GR125	GR125	LI-31	1450 to 1650 lb.ft (1966 to 2237 N.m)	0.008" to 0.059" (0.2 to 1.5 mm)	15 kpsi* (103 MPa)*	130 klb (59 Tn)	1500 lb.ft (2034 N.m)	PCP, GL, IW
HS147	HS147	LI-31	1450 to 1650 lb.ft (1966 to 2237 N.m)	0.008" to 0.059" (0.2 to 1.5 mm)	15 kpsi* (103 MPa)*	130 klb (59 Tn)	1500 lb.ft (2034 N.m)	PCP, GL, IW

\*Calculated value.

(1) Connection tested under 20 Tn axial load, 150°C and recommended make up torque, using nitrogen gas up to 15000psi without leakage.

PCP: Progressive Cavity Pumping. GL: Gas Lift.

GL: Gas Lift.

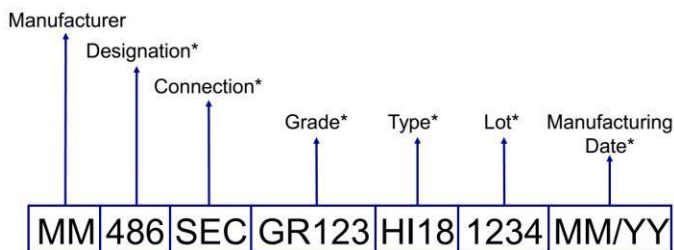
IW: Injection Well.

## Non Destructive Testing:

All raw material is carefully inspected using electromagnetic and/or ultrasonic methods to ensure the soundness of the final product.

## Marking:

Products are marked for it's proper identification and traceability using laser engraving or die punching at manufacturer's option.



\*Values shown are for reference only



## Packaging:


Nipples are packed in 8 pieces boxes and then into 18 boxes crates (other quantities might be available). Crates maximum weight 215 kg (474 lb).



## Labeling:



Metalmecánica S.A.  
Ruta 55 Km. 754,1  
Villa Mercedes (San Luis)  
Made in Argentina

BOX N°	00000	DATE:	07/17
PRODUCT:HolloRod™ Nipple 486 SEC NU LI-20			
PRODUCT DATASHEET CODE:	N01		
PRODUCT DATASHEET NAME:	HRN486SECNU		
GRADE	HS147		
QTY:	180		
CLIENT:			
SALES ORDER:			
DESTINATION:		NET WEIGHT:	(kg)

\*Values for reference only

## Ordering Information:

When placing an order please attach the following information:

**PDS:** HRN576SECNU

**Type:** LI-31

**Grade:** GR125

Unless otherwise specified product is without wrench flats.

Tenaris has issued this document for general information only, and the information in this document is not intended to constitute professional or any other type of advice or recommendation and is provided on an "as is" basis. No warranty is given. Tenaris has not independently verified any information -if any- provided by the user in connection with, or for the purpose of, the information contained hereunder. The use of the information is at user's own risk and Tenaris does not assume any responsibility or liability of any kind for any loss, damage or injury resulting from, or in connection with any information contained hereunder or any use thereof. The information in this document is subject to change or modification without notice. Tenaris's products and services are subject to Tenaris's standard terms and conditions or otherwise to the terms resulting from the respective contracts of sale or services, as the case may be. Unless specifically agreed under such contract of sale or services, if Tenaris is required to provide any warranty or assume any liability in connection with the information contained hereunder, any such warranty or liability shall be subject to the execution of a separate written agreement between petitioner and Tenaris. For more complete information please contact a Tenaris's representative or visit our website at [www.tenaris.com](http://www.tenaris.com). All rights reserved. ©Tenaris 2021.